

Chapter 14 Playing Schedule

14.1 Open the schedule table

Click on the “control” and select “Schedule Table Setup” (Image 14-1 , 14-2).

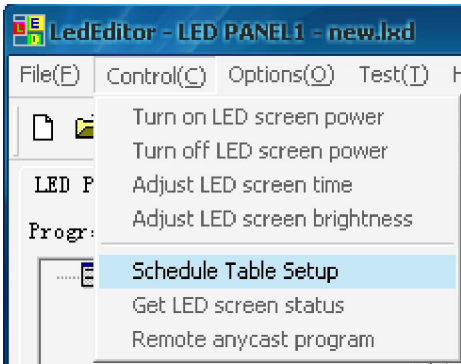


Figure 14-1

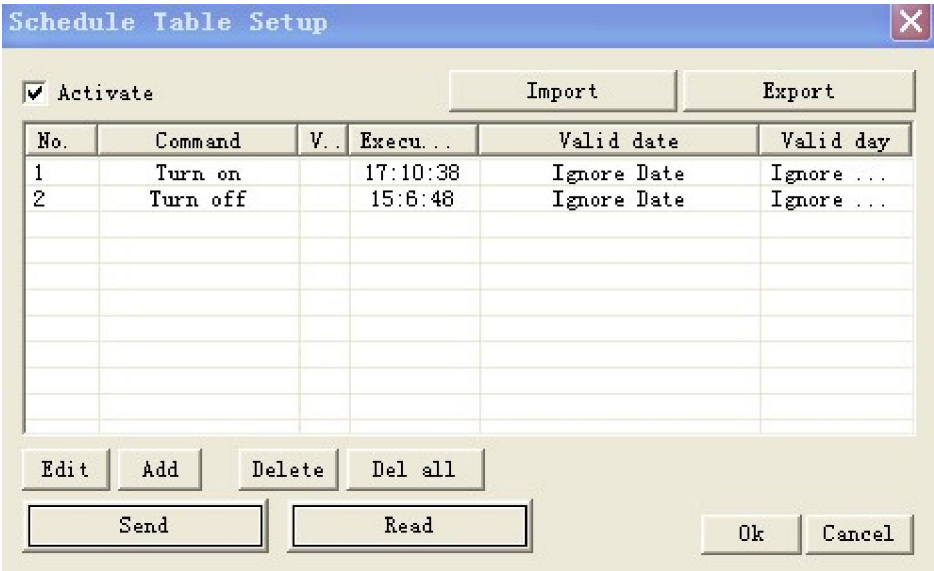


Figure 14-2

14.2 Start up Scheduled Command

Click on “Activate” and activate the schedule table, vice versa. (Image 14-3)

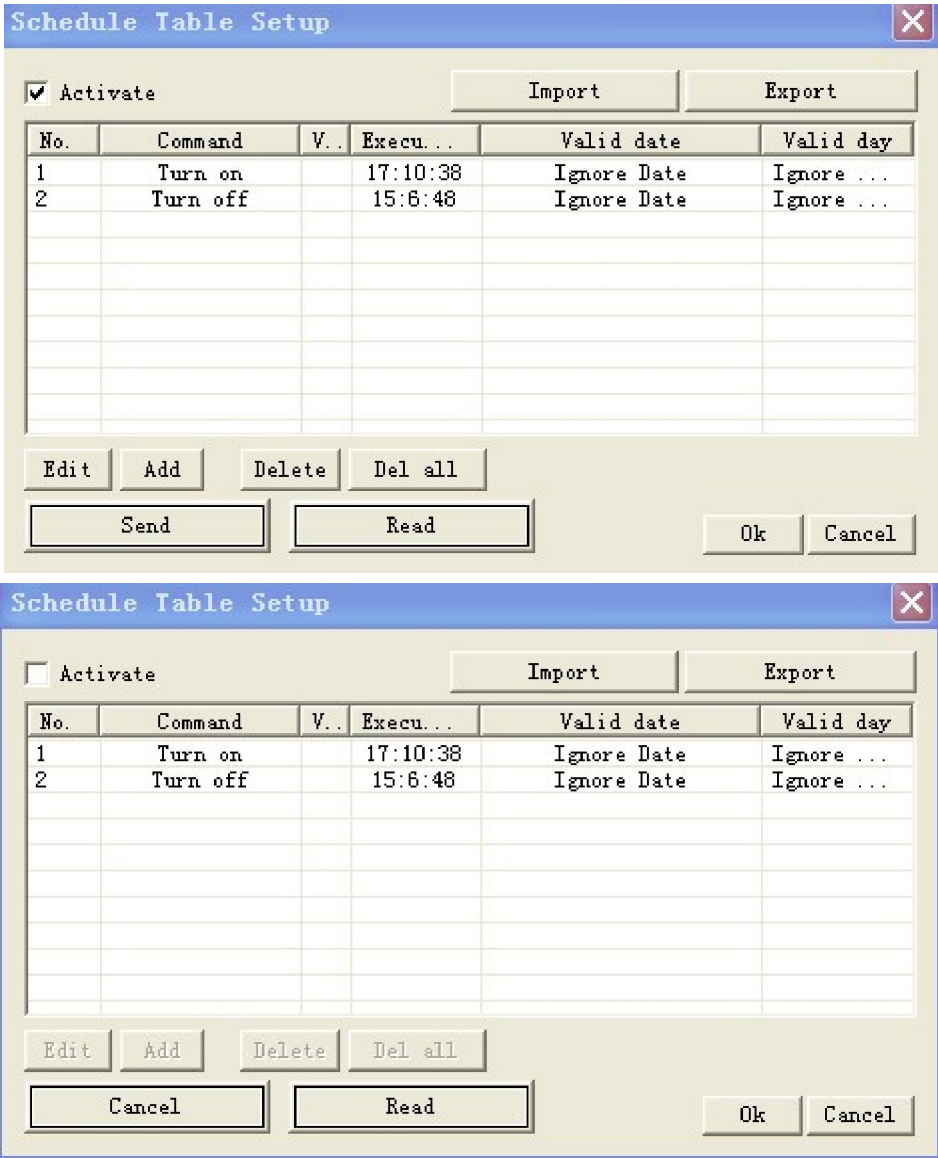


Figure 14-3

14.3 Add Scheduled Command

14.3.1 Step 1: Open “Scheduled Command” dialog box.

Click on “add” button to open “Scheduled Command” dialog box. (As shown in image 14-4)

Edit scheduled command table

Command: Turn on LED screen 1

Execution: 08:30:--

Valid Date

☐ Ignore Date

☒ Set Date From: 2009- 9-19 To: 2009- 9-30

Valid Days

☐ Ignore Days

☒ Set Days

☒ Mon ☒ Tue ☒ Wed
☒ Thu ☒ Fri ☐ Sat ☐ Sun

Ok Cancel

Figure 14-4

14.3.2 Step 2: Setup Command list properties

Command properties: Select command property, default setting is “Turn on LED Screen power” and other settings are “Turn off LED Screen power”, “Adjust LED screen bright”.

Time: Setup start time

Valid date: Setup valid date

Valid day: Setup valid day

14.3.3 Step 3: Exit “Scheduled Command” Dialog box

Click “ok” to finish. As shown in image 14-5, there is already a “Turn on LED screen power” command and a “Turn off LED screen power” command in the list, if you want more than one command, repeat three steps above.

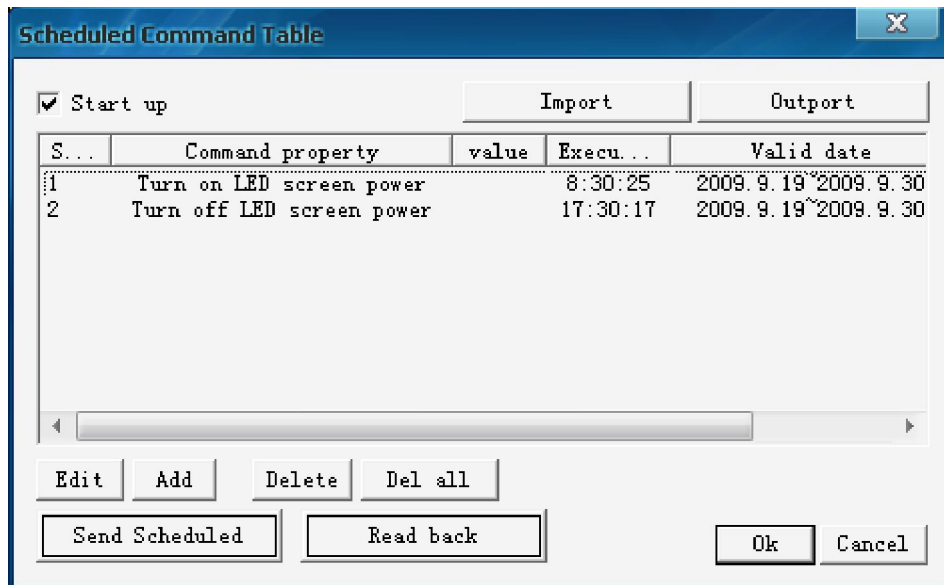


Figure 14-5


14.4 Edit Scheduled Command

Select the command that you want to edit on the list. Click on “edit” button to open “Scheduled command” dialog box then to edit it.

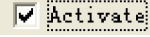
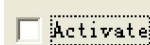
14.5 Delete Scheduled Command

Select the command that you want to delete , click on “delete” button, if you want to delete all commands, use “delete all” button.

14.6 Send Scheduled Command

Please connect controller with LED screen after finishing the settings. At last, click on “Send”button  to finish scheduled function.

Note:

1. Select “Activate” button  , click on “Send” button, set up scheduled command.
2. Cancel “Activate” button  , click on “Cancel” button, cancel scheduled command.

14.7 Read back Scheduled Command message

Click on “Read” button, check scheduled command message on LED screen, as shown in image 14-6.

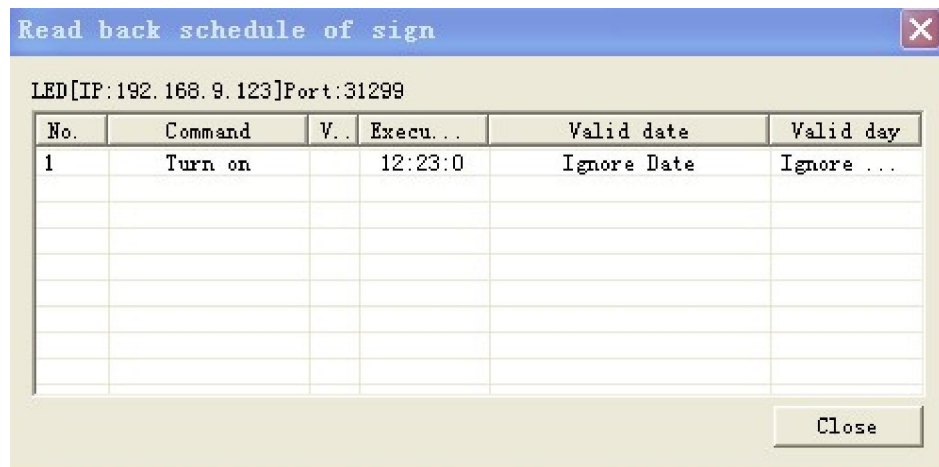


Figure 14-6

14.8 Import, Export schedule table file

Click on “Export” button then a dialogue box will pop up, save as ledfile (*.shtab).

Click on “Import” button then a dialogue box will pop up then select the file and import it.

14.9 Playing Program on schedule (please refer to Chapter10, 10.3)